



P.O. Box 1469
West Jordan, UT 84084-1469
Tel: (801)580-6824
bwana@safari-express.com
www.safari-express.com



KENYA SAFARI
(birthing season)
February 2012
(13 Days - Includes Air Travel Days)

*Pursue the Inspiration of Hemingway,
and Discover the Romance and Thrill
of an African Safari.*



Join the Safari Express Company on its group tours to East Africa. Space is limited so book now to guarantee your window seat to adventure.

If you have further questions after reading this information you can access the [FAQ's](#) on our web site or Email us at the above address. If you would like a copy of this flier to forward to other interested parties we will do so via Email. A second option is to visit our web site where you'll find a link to this tour on the top of each page. Once the link takes you to this tour you'll find a download button at the end of the itinerary.

A **\$500.00** deposit for each person will be due *no later* than **November 22, 2011**. You are welcome to send the check to us earlier than this date to ensure your space. Tour bookings will be on a first come first serve basis. Deposit is fully refundable up to **November 22, 2011**. A 50% penalty on the deposit will be assessed for cancellations after this date. If the tour operates with fewer than 8 people there will be a supplemental charge. Final payment will be due on **January 7, 2012**. Periodic letters with extras, excursions and additional information as well as photo tips will be mailed after **November 22, 2011**.

Items included are: all lodging, indicated meals, ½ liter of water, all ground transportation, Driver/Guides, Tour Leaders and park fees. All of the lodging will have clean rooms with private showers and toilets.

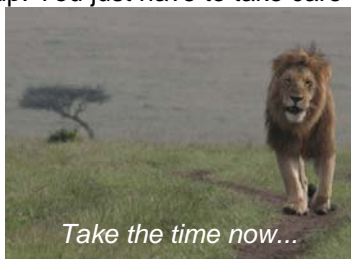
Items not included are: airfare*, beverages, items of a personal nature (laundry can be done in the lodges), tips and Kenya visa - currently \$50 (subject to change).

* Current carriers flying into Nairobi, Kenya (NBO): British Air (BA), Delta (DL) - as a code share, Egypt Air (MS), KLM (KL), Kenya Air (KQ), South African Airways (SA), Swiss (SR) and SN Brussels (SN).

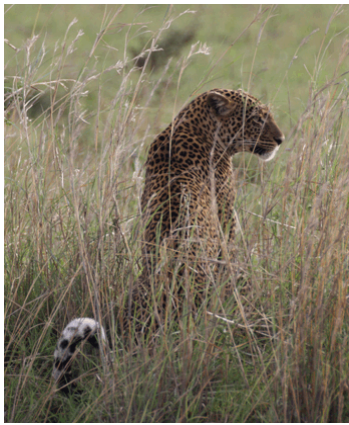
Make checks payable to Safari Express Company. **REQUIRED** - Either by Email or on a separate piece of paper include your name, address, Email address, telephone number, passport number, country of residence. and emergency contact with address and telephone number. Mail to Safari Express Company, P.O. Box 1469, West Jordan, UT 84088.

On this tour you have the opportunity to meet local peoples (Kenya has over 40 tribes), enjoy breath taking landscapes and see vast amounts of wildlife that include the Big Five - lion, leopard, black rhino, elephant and cape buffalo. Other wildlife include three types of giraffe, two types of zebra, bat eared fox, cheetah, hyena, jackal, hippos, baboons, monkeys - sykes, colobus and vervet, three types of gazelle, impalas and a wide variety of other antelope and exotic birds.

We limit the total number of people per van to six which ensures that everyone will have a window seat. The Tour Leaders and all the Driver/Guides take care of the entire group. You just have to take care of yourself and enjoy.

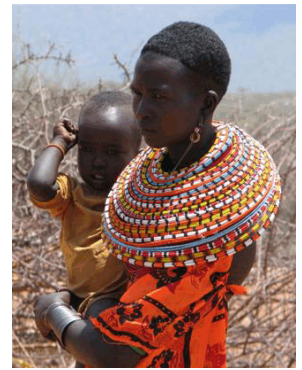


*Take the time now...
... before time takes it!*



KENYA SAFARI (birthing season)

February 2012
Safari Itinerary



February

23 (Th) - Depart U.S. for your gateway to Kenya.

24 (Fr) - Depart from your gateway and arrive in Nairobi, Kenya. Transfer to The Stanley Hotel for overnight. (B)

25 (Sa) - There will be a tour briefing at 8 am, reviewing the itinerary with suggested 'Do's & Don'ts' to make your trip more pleasurable. Questions will be answered during this time.

In the morning we will tour the Blixen House (*Out of Africa*) followed by a visit with the rare Rothschild Giraffe at the Langata Giraffe Center. Lunch will be at the Carnivore Restaurant. Overnight at The Stanley Hotel. (BL)

26 (Su)- Morning departure for the Northern Frontier and the parks of Samburu, Buffalo Springs and Shaba. A *possible surprise* awaits along the way. As we continue north we'll cross the equator before we arrive at Samburu. Lunch will be at our lodge followed by an afternoon game drive. Overnight at Samburu Sopa Lodge. (BLD)

27 (Mo) - Full day game viewing in search of animals indigenous to this area only. Morning visit to a Samburu tribal village. Second night at the Samburu Sopa. (BLD)

28 (Tu) - Leave after breakfast and drive south into the forests of the Aberdare Mountain range arriving at Mountain Lodge for lunch.

This is a tree lodge set in a forest glade with a water hole that attracts all sorts of wildlife during the day and night. The water hole is floodlit and can be viewed from several platforms including one that is underground. Overnight at Serena Mountain Lodge. (BLD)

29 (We) - Easy morning drive to Lake Nakuru via the town of Nyahururu - home of the famous Kenya marathon runners. We have a small *surprise* for you here. Afternoon game and bird viewing around the lake that is famous for its flamingoes - the pink lake seen from space. Overnight at the Lake Nakuru Lodge. (BLD)

March

01 (Th) - After breakfast depart for the Masai Mara. We'll have a *surprise* en-route to the park. Once we enter the park we'll have our lunch at our lodge. An afternoon drive is planned. Overnight at the Mara Simba Lodge for the next three nights. (BLD)

02 (Fr) - Morning and afternoon game drives in wildlife paradise. There is an optional sunrise balloon safari available that includes a champagne breakfast out on the plains of the Masai Mara. True Africa. (BLD)

03 (Sa) - Full day of game viewing in this great park searching for the 'Big Five'. Mara at 700 square miles is Kenya's extension of the Serengeti. (BLD)

04 (Su) - Pre-breakfast game drive. After breakfast we'll have a slow game drive as we depart the Masai Mara. We'll take a picnic lunch for us once we leave the park. Then we'll head across acres of rolling wheat and barley farms to Narok, the district headquarters of this part of Maasailand. From here cross the vast plains on the floor of the Rift Valley before heading up the rift escarpment. You'll arrive into Kenya's bustling capital in the late afternoon and transfer to The Stanley Hotel. (BL)

05 (Mo) - Day at leisure before the evening departure. A day room at The Stanley Hotel is provided for relaxation and preparation for the long journey home. Early evening transfer to the airport. (B)

06 (Tu) - Once in your gateway (European or African) transfer to your flight back to the U.S.

Inclusive meals as indicated:
B = breakfast, L = lunch, D = dinner.

PRICE LIST *

Tour Cost (10 or more people) - **\$3325.00** **

Supplement (if 9 people or less) - **\$150.00** **

For those wanting their own room there is an additional Single Room Supplement (SRS) - **\$580**

Optional Extras

Extra night at The Stanley (B/B)

- **\$125.00 (Su - Th)** **

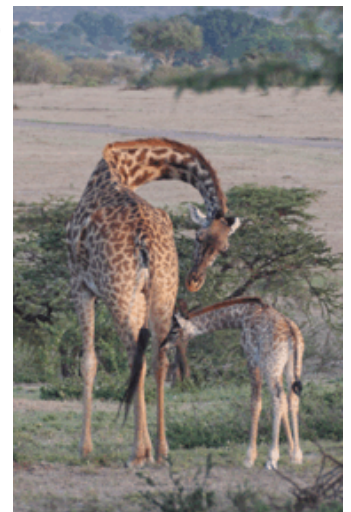
- **\$90.00 (Fr & Sa)** **

The Stanley SRS - **\$75**

Balloon Safari - **\$425**

** Per person based on double occupancy

Fall in love with one of the most provocative tour destinations in the world - East Africa. While on safari, experience an adventure that will guarantee unforgettable memories.



* The Safari Express Company reserves the right to alter the itinerary and/or any of the lodges if circumstances dictate.